




## C850

### OUTPUT RATING 60 Hz, 3 Phase

Standby	Prime	Voltages
680 kW	620 kW	380/220, 416/240
850 kVA	775 kVA	440/254, 480/277
0.8 Pf		12 lead re-connectable

### GENERAL SPECIFICATIONS

Engine	Alternator	Control Panel
		
<b>KT38G</b>	<b>TAL-A49-B1</b>	<b>InteliLite IL-9</b>
12 Cyl. 60° Vee	3 Phase	Auto Start
37.8 Ltr.	12 Lead	7 inputs/6 outputs
Elect. Speed Gov.	4 pole, 1 Bearing	3 analog inputs
Turbo/Aftercooled	R180 AVR	Remote Monitor

### Weights & Dimensions

	Open	20' ISO Container
Length (L)mm	4405	6058
Width (W)mm	1870	2438
Height (H)mm	2145	2591
Net Weight kg	6869	11500



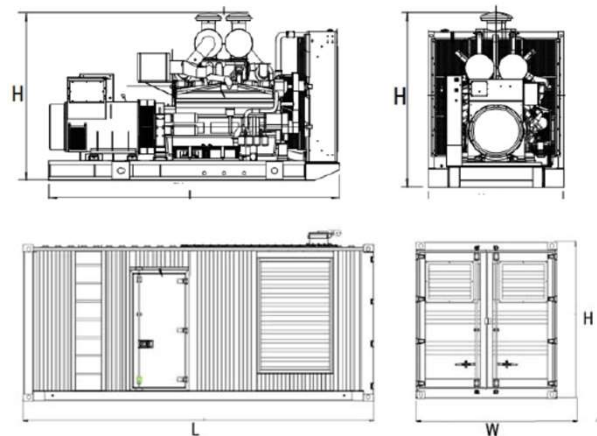
Fuel Consumption /hr	Liters	Gallons
100% Standby Power	173.0	45.7
100% Prime Power	154.0	40.7
75% Prime Power	118.0	31.2
50% Prime Power	84.0	22.2
<b>Fuel Tank Capacity, Open Unit</b>		
<b>Fuel Tank Capacity, 20' ISO</b>		

#### Standby Rating:

According to ISO 8528-1:2005, standby power is the maximum power available during variable electrical power sequence, under the stated operational conditions for which a generating set is capable of delivering in the event of a utility power outage for up to 200 hrs. per year while meeting manufacturers recommended operation and maintenance requirements. The permissible average power output over a 24 hr. period shall not exceed 70% of this rating.

#### Prime Rating:

According to ISO 8528-1:2005, prime power is the maximum power which a generating set is capable of delivering continuously while supplying a variable electrical load when operated for an unlimited number of hours per year while meeting manufacturers recommended operation and maintenance requirements. The permissible average output (Ppp) over a 24 hr. period shall not exceed 70% of this rating.

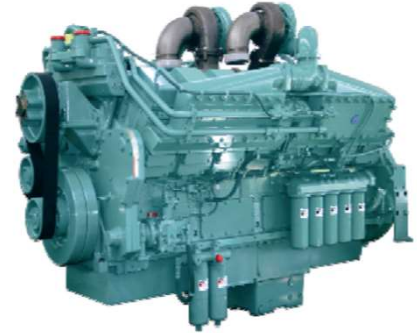


Blue Power gensets are compliant with EC mark which include the following directives:

- \* 2006/42/EC Machinery Safety.
- \* 2006/95/EC Low Voltage.

## Engine Specifications

Engine Model	KT38G
Engine Type	12 Cyl. 60° Vee
Bore x Stroke (mm)	159x159
Displacement (L)	37.8 L
Engine H.P. at 100% Standby Power	1000
Compression Ratio	15.5:1
Aspiration Type	Turbo/Aftercooled
Intake Air Flow (Ltr/sec.)	991
Injection Type	Cummins PT/Direct
Governor Type	Electronic
Coolant Capacity Eng.	111 L
Oil Pan Capacity	135 L
Electrical System Voltage	24vdc
Max Exhaust Back Pressure	10 kPa
Exhaust Gas Flow (Ltr/sec.)	276
Exhaust Gas Temp.	529 C°



## A.C. Alternator Data

Leroy Somer Model	TAL A49-B1	Standard AVR Model	R180
Winding Type	12 Lead, 3 Phase	Excitation Type	AREP
Power Factor	0.8	Voltage Regulation	±1.0%
Insulation Class	H	Max. Overspeed	2250 rpm
Winding Pitch	2/3	THF	<2%
Ingress Protection	IP23	TIF	<50

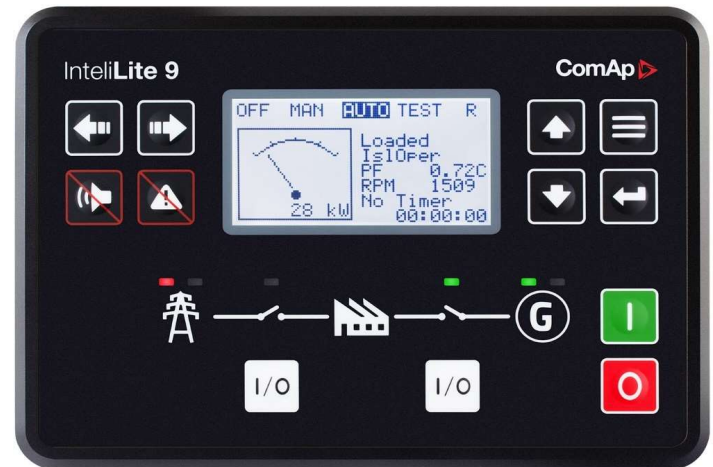
Alternator Performance Data	60 Hz			
	<b>Voltage Series Star (WYE)</b>	380	416	440
<b>Voltage Delta</b>	220	240	254	277
<b>kVA Base Rating at 0.8 Pf</b>	<b>800</b>	<b>875</b>	<b>925</b>	<b>1005</b>

Base Rating is for Standby - 163/27°C @0.8 Pf

Leroy Somer complies with international standards and regulations: IEC 60034 and derivative, they are designed, manufactured and marketed in ISO 9001 & 14001 environment and can be integrated into a CE market generator set.

## Benefits

- ▶ Single gen-set controller for standby and prime applications
- ▶ Direct Communications with EFI engines
- ▶ All-in-one intuitive & powerful PC tool for configuration/monitoring/control, locally or remotely



## Features

- ▶ Standby and Prime power application in one unit
- ▶ 5 languages in the controller and translator functionality
- ▶ 3 levels of password security
- ▶ 3 sets of alternative configurations
- ▶ Magnetic pick-up input
- ▶ ECU support and TIER4 Final ready
- ▶ Plug-in Module concept for more capabilities (Modbus, Internet, SMS, inputs/outputs)
- ▶ 1 slot for Plug-in modules
- ▶ Power over USB for controller adjustments
- ▶ Adjustable D+ threshold
- ▶ Ventilation pulse
- ▶ Flexible Choke
- ▶ Fuel pump control
- ▶ 3 analog inputs, 6+1 binary inputs, 6 binary outputs
- ▶ 2 higher current binary outputs
- ▶ Adjustable delay for binary inputs
- ▶ Alarms and gen-set status assignable to binary outputs
- ▶ Run hours source ECU or internal
- ▶ Real time clock
- ▶ Multi purpose scheduler functionality
- ▶ 3 maintenance timers
- ▶ Detailed history log with up to 150 records
- ▶ Zero power mode
- ▶ Possibility to disable protections
- ▶ Modbus register mapping possibility
- ▶ Start on Low Battery (only for native prime power configuration)
- ▶ Cutout dimensions: 172mm x 112mm (same as Intellilite NT family)



## ComAp IntelliLite AMF 20 Control Panel meets the following certificates and sta

- EN61000-6-2
- EN61000-6-4
- EN61010-1
- EN61000-2-1 (-20°C/16h for std version)
- EN6100-2-2 (70°C/16h)
- EN61000-2-6 (2÷25Hz/ ±1,6mm; 25÷100 Hz/4,0 g)
- EN61000-2-27 (a=500 m/s<sup>2</sup>; T=6 ms)
- EN61000-2-30
- EN60529 (front panel IP65, back side IP20)

